

DFRWS 12th Annual Digital Forensics Research Conference 2025EUROPE

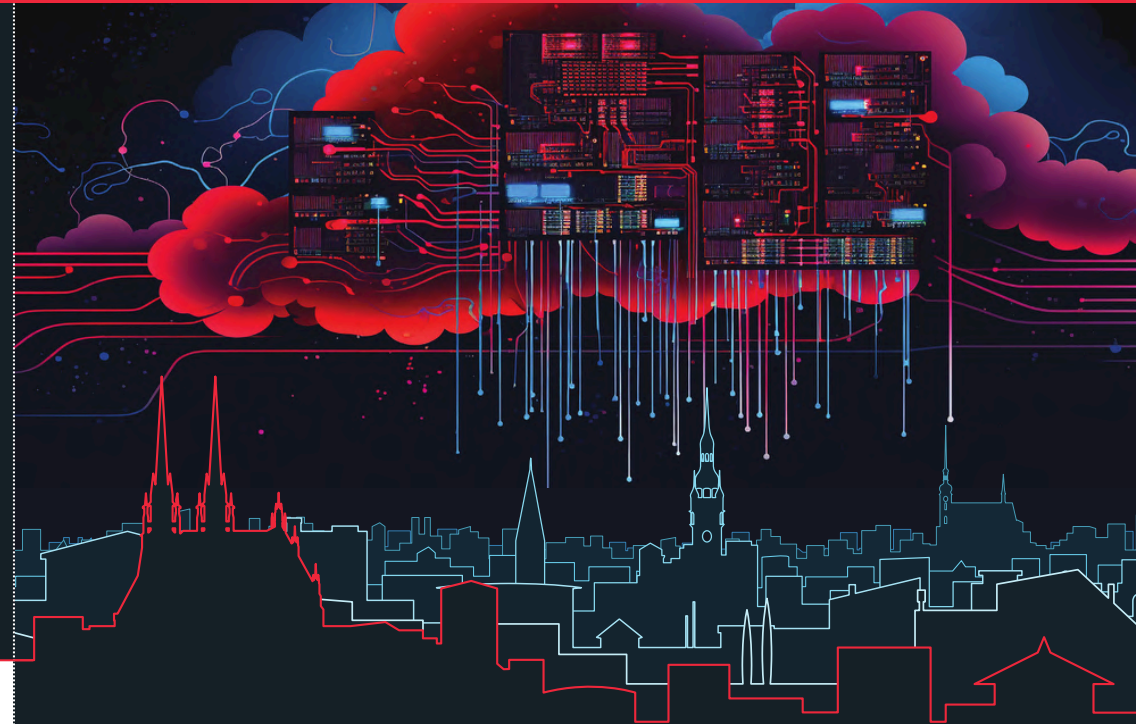
The conference has been made possible
thanks to our partners and sponsors:



Ministry of Justice
of the Czech Republic



Národní úřad
pro kybernetickou
a informační bezpečnost



BRNO

CZECH REPUBLIC

Conference & City Guide

1–4 APRIL, 2025

in cooperation with



Hi, welcome to Brno and Czechia!

Ahoj, víítej v Brně a v Česku!

Brno, the former capital city of Moravia and the hub of the South Moravian Region, is the second-largest city in the Czech Republic. Brno has a beautiful historic center. Places worth seeing include the Cathedral of St. Peter and Paul at the Petrov hill, náměstí Svobody (Freedom Square), the Zelný trh square (Vegetable Market), Špilberk castle, and Stará radnice (Old Town Hall) where you can visit the tower and enjoy enchanting views.

Staying a couple of days longer? Consider purchasing the [Brnopas](#) to get the most of your Brno experience. This single tourist card covers entrance to all the most famous destinations and offers a notable discount for other services.

Czechia, Czech republic, or Czechoslovakia?

In 1993, Czechoslovakia was split into two independent nations: Czech Republic and Slovakia (Slovak Republic). This peaceful split is known as the “Velvet Divorce”. Since 2016, “Czechia” has become the official short name for the country (yet “Czech Republic” remains the official full name). Contrary to what foreigners might tell you, Czechs do not really care if you say “Czech Republic” or “Czechia”.

Czechs

Czechs are a nation of pragmatic and realistic people who favor efficiency and practical solutions over grand gestures. The years of suffering under foreign occupations are reflected in the mentality of Czech people who value their autonomy and are usually skeptical towards authorities and lofty promises. At first sight, they might seem a little grim and reserved. In fact, it is our national custom to look grim and complain about the bad day we are having. Czechs are often shy with strangers but once you get to know them better, you will learn that they are very sincere and warm-hearted people. They have a great sense of humor, though maybe a bit dry, sarcastic, and often “dark”. Czechs are proud of their rich cultural heritage in literature, music, and art. Just like their German neighbors, they are renowned for their beer culture.

Currency, payments, ATMs

Unlike many EU countries, Czechia retains its own currency (**CZK** or **Kč** = Koruna česká = Czech Crown). 1 EUR is about 25 CZK. Most shops, restaurants, pubs and coffee shops accept bank cards. There is a plenty of ATMs around Brno, but remember to always use the ones with the logo of one of the Czech banks (KB, Česká spořitelna, Air Bank, Moneta, Fio Banka, ČSOB, Raiffeisenbank). Never use *Euronet* ATMs or others without a bank logo – these are tourist traps that rip you off by unfavorable rates and/or extra fees!

When paying by card, **always select to pay in CZK**, not in your home currency (your bank will have better CZK rates than the terminal). When prompted, be sure to decline “dynamic conversions”. A little tip for a cheap souvenir: Obtain a 10 CZK coin – they depict the magnificent Cathedral of St Peter and St Paul in Brno.

English in Czechia

In 1990, compulsory teaching of a foreign language was introduced. In most cases, it is English. The younger generation thus generally understands and speaks English reasonably well. Unfortunately, this is not always the case with the older generations. Generally, the Czech accent is considered easy to understand.

Basic Czech vocabulary

Hello / Hi / Bye (informal)	Ahoj / Čau	A-hoy / Tschau	[aħoj / tʃau]
Hello / Good day (formal)	Dobrý den	Doh-bree dehn	[dobri: dɛn]
How are you? (informal)	Jak se máš?	Yak se maash?	[jak sɛ ma:ʃ]
How are you? (formal)	Jak se máte?	Yak se mahte?	[jak sɛ ma:tɛ]
Fine, thank you	Dobře, děkuji	Dob-rzhe dye-koo-yi	[dobrɛ ɟɛkuji]
My name is ...	Jmenuji se ...	Men-ooyi se ...	[jmɛnuji sɛ]
Nice to meet you	Těší mě	Tyeh-shee mnyeh	[cɛʃi: mɲɛ]
Goodbye (formal)	Na shledanou	Nah-skleh-dah-noh	[nasxlɛdanou]
Thank you	Děkuji	Dye-koo-yih	[ɟɛkuji]
Please	Prosím	Pro-seem	[prosi:m]
Yes	Ano	Ah-noh	[ano]
No	Ne	Neh	[nɛ]
I don't know	Nevím	Neh-veem	[nɛvi:m]
Excuse me (formal)	Promiňte	Proh-minh-teh	[promiɲtɛ]
I'm sorry	Omlouvám se	Om-loh-vaam se	[omlouva:m sɛ]
I don't understand	Nerozumím	Neh-roh-zoo-meem	[nɛrozumi:m]
I don't speak Czech	Nemluvím česky	Nem-loo-veem chehs-kee	[nɛmluvi:m tʃɛski]
Where is ...?	Kde je ...?	Geh-the-yeh ...?	[gdɛ ɟɛ]
Where is the bathroom?	Kde je WC?	Geh-the-yeh veh-tseh?	[gdɛ ɟɛ vɛ:tʃɛ:]
I will have ...	Dám si ...	Daahm-si ...	[da:m si]
Beer	Pivo	Peh-voh	[pivo]
Wine	Víno	Vee-noh	[vi:no]
I will pay (getting a bill)	Zaplatím	Zah-phla-theem	[zaplaci:m]
Help!	Pomoc!	Poh-mots!	[pomotʃ]

Arriving in Brno

By plane

Brno has a small airport: Brno – Tuřany (BRQ), offering connections from London, Milan, and several other locations. If you arrive at the Brno airport, you can use the local bus service E76. It is a part of the city's public transport, so refer to the "Getting around" section below for information on tickets.

However, most of the suitable connections fly to **Vienna** (VIE). Once in Vienna, you can take a direct bus (about 2 hours) to Brno from companies like [RegioJet](#), [Flixbus](#), or [Gepard Express](#). Tickets can be purchased online at their websites. You can take a train from the Vienna Airport: typically, you would go to Vienna's main train station (Wien Hbf) and transfer to a train to Brno (operated by ČD – Czech Railways, ÖBB – Austrian Railways, or RegioJet). There is also a direct train from the airport to Brno operated by Gepard Express that departs at 23:33.

You can also fly to Bratislava (BTS) and take a direct bus to Brno operated by [Flixbus](#) or [Omio](#) (about 2 hours). Another option is flying to **Prague** (PRG), taking the [Airport Express](#) (40 minutes) to the main railway station (Praha, Hlavní nádraží), and then a [train or a bus](#) to Brno (2,5 to 3 hours).

By train or bus

Various providers offer buses and trains to Brno from different cities across Europe. We recommend using the [IDOS](#) web or mobile app to search for tickets. For trains, the destination is [Brno, hlavní nádraží](#) (Brno Main Train Station) from which you can take a tram, bus, an Uber, a Bolt, or another taxi to your hotel (see the "Getting around" section below). Long-distance buses usually arrive at Brno, Benešova tř. hotel GRAND ([250 m from the main train station](#)), and sometimes at Brno, ÚAN Zvonařka ([800 m from the main train station](#)).

By car

Brno is fully connected to the highway network. For using the highway, it is required to [purchase a vignette online](#) (do **not** buy a vignette at the border crossing). We recommend the 10-day vignette for 290 CZK (~11 EUR).

Typically, all hotels offer some sort of parking. Parking is also available at paid parking lots and parking houses. Beware that most streets in the city center are part of the [Brno zoned parking system](#) where you need to pay a fee that depends on the location, day/time in the week, and the duration of your parking. Those lots are clearly distinguishable by a painted blue line on the road. At some of them, there is a vending machine, but it is easiest to pay through [the ParkSimply website](#) or using the [MPLA.IO](#) app for [Android](#) or [iPhone](#). Most of the city center is in the B zone (zóna B), while the surroundings of the BUT FIT conference venue are in the C zone (zóna C). When the parking lot / area on the road is a part of the parking system, there is usually also a traffic sign nearby that informs you of the zone.

At the conference venue, you can park for free directly at [Božetěchova street](#) or in one of the neighboring streets. In close proximity, there is the [Božetěchova parking lot](#) that is free of charge (but often full).



△ Špilberk Castle

📷 Monika Hlaváčová - Pocket media s.r.o., [source](#)

▽ Faculty of Information Technology, BUT

📷 Václav Koniček, BUT



Getting around

The city offers a rich (and cheap) network of trams, buses, and trolleybuses. Trams are numbered 1 to 12, trolleybuses are 25 to 39, and buses are 40 and above. To search for connections, you can use Google Maps, the IDOS website/app, or the DPMBinfo app (all available in English).

The schedule and lines differ during the day and night. From 11PM to 7AM, the 11 night buses named N89 to N99 meet each hour at the Main Train Station. From there, they go around various parts of Brno and meet once again at the Main Train Station.



idos.cz/en/idsjmk



dpmbinfo.dpmb.cz

Tickets

Using Beep & Go: All public transport vehicles come with orange “validator” machines located near the doors. Each time you **board** a vehicle, just **tap** your contactless bank card (and wait a few seconds). The system will bill you the best fare possible at the end of the day. You *can* also tap when you exit – it might get you a lower fare if your ride is < 15 minutes. If the ticket inspector comes (they present themselves with a badge), tap your card at their specially equipped card reader.

Paper tickets: At **some** stops, you’ll find orange vending machines that sell paper tickets. They differ in their **time validity** and covered **zones**. You don’t have to care about the zones – all the 60min+ tickets are valid for Brno! When you enter a vehicle, you have to **mark** your paper ticket in the orange validator near the door. Unmarked tickets are not valid.

Towards the conference venue

To get to BUT FIT (the venue) from the city center, take the tram number **1** in direction *Řečkovice* or tram number **6** in direction *Královo Pole, nádraží*. The destination stop is called **Semilasso**. The next page shows in detail how to get to the venue from there.

The address is: **Božetěchova 1/2, Brno (N49.2264, E16.5963)**

Hotel Continental is located in the city center. We recommend taking a 7-minute walk to the **Antonínská** or **Moravské náměstí** tram stop where you’ll board one of the trams **1** or **6**.

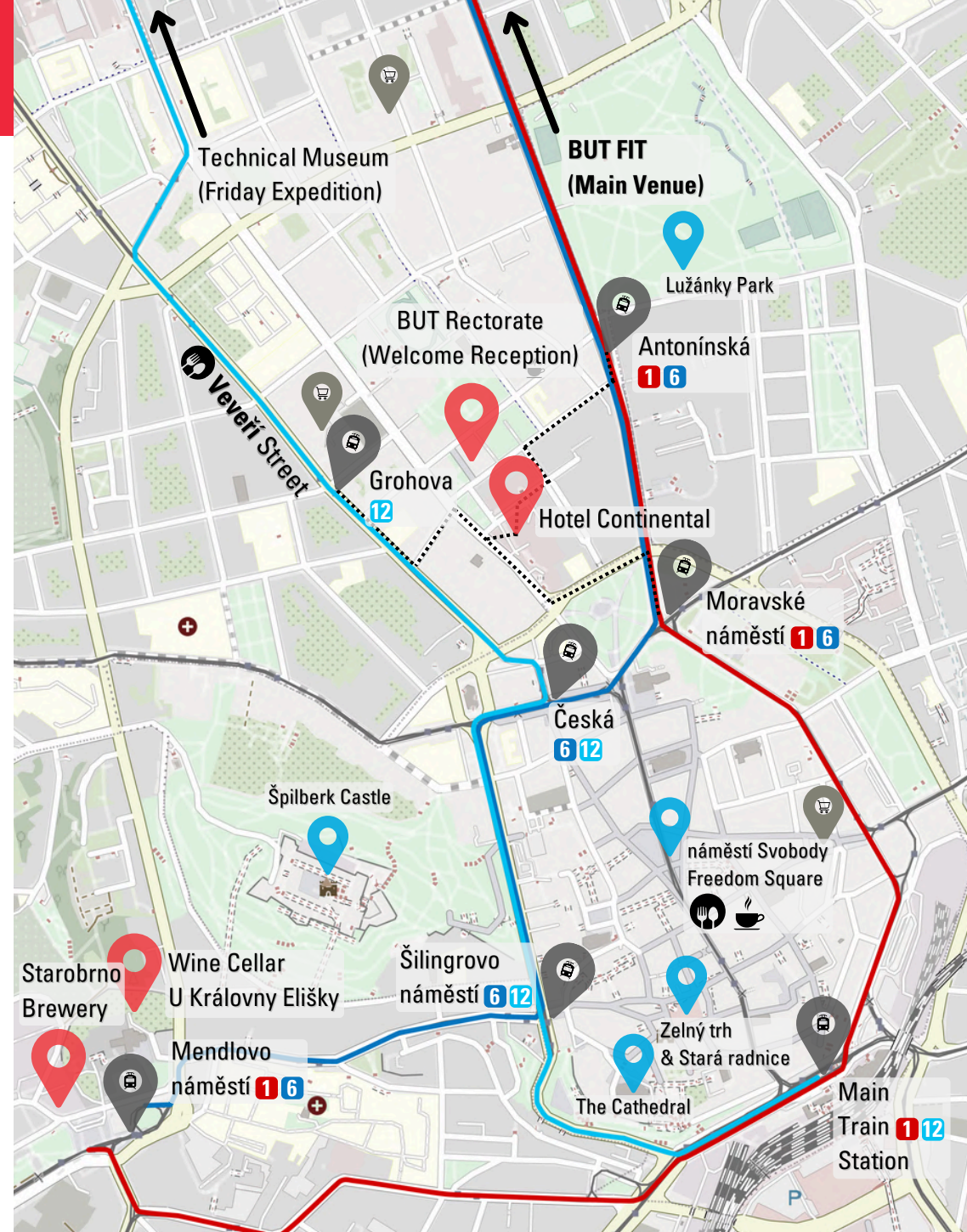
Towards the social events

The welcome reception (Tuesday) takes place in the **Rectorate** building of the university. It is located in the city center, next to Hotel Continental. The nearest tram stops are **Antonínská** (trams **1, 6**) or **Grohova** (tram **12**).

The address is: **Antonínská 548/1, Brno (N49.2016, E16.6031)**

The awards ceremony and rodeo (Wednesday) is located in **Pivovarská Starobrno** (Starobrno brewery restaurant). The nearest tram stop is **Mendlovo náměstí** (trams **1, 6**).

The address is: **Mendlovo náměstí 158/20, Brno (N49.1908, E16.5928)**



The Thursday social event is located in **vinárna** (wine cellar/bar) **U Královny Elišky**, very close to the brewery. The nearest tram stop is also **Mendlovo náměstí** (trams **1, 6**). The address is: **Mendlovo náměstí 959/1b, Brno (N49.1924, E16.59435)**

Towards the expedition

The expedition on Friday will show you the wonderful **Technical Museum in Brno**. The nearest tram stop is **Technické muzeum** (tram **12**). We suggest you to take a walk from the FIT campus: have a lunch in one of the restaurants around the *Palackého třída* street, chill out in the cozy *Slovanské náměstí* park, and then head off to the **Skácelova** tram stop for a direct connection to the museum. The address is: **Purkyňova 2950/105, Brno (N49.2284, E16.582)** Be sure to **arrive before 14:00 (2:00 PM)!**

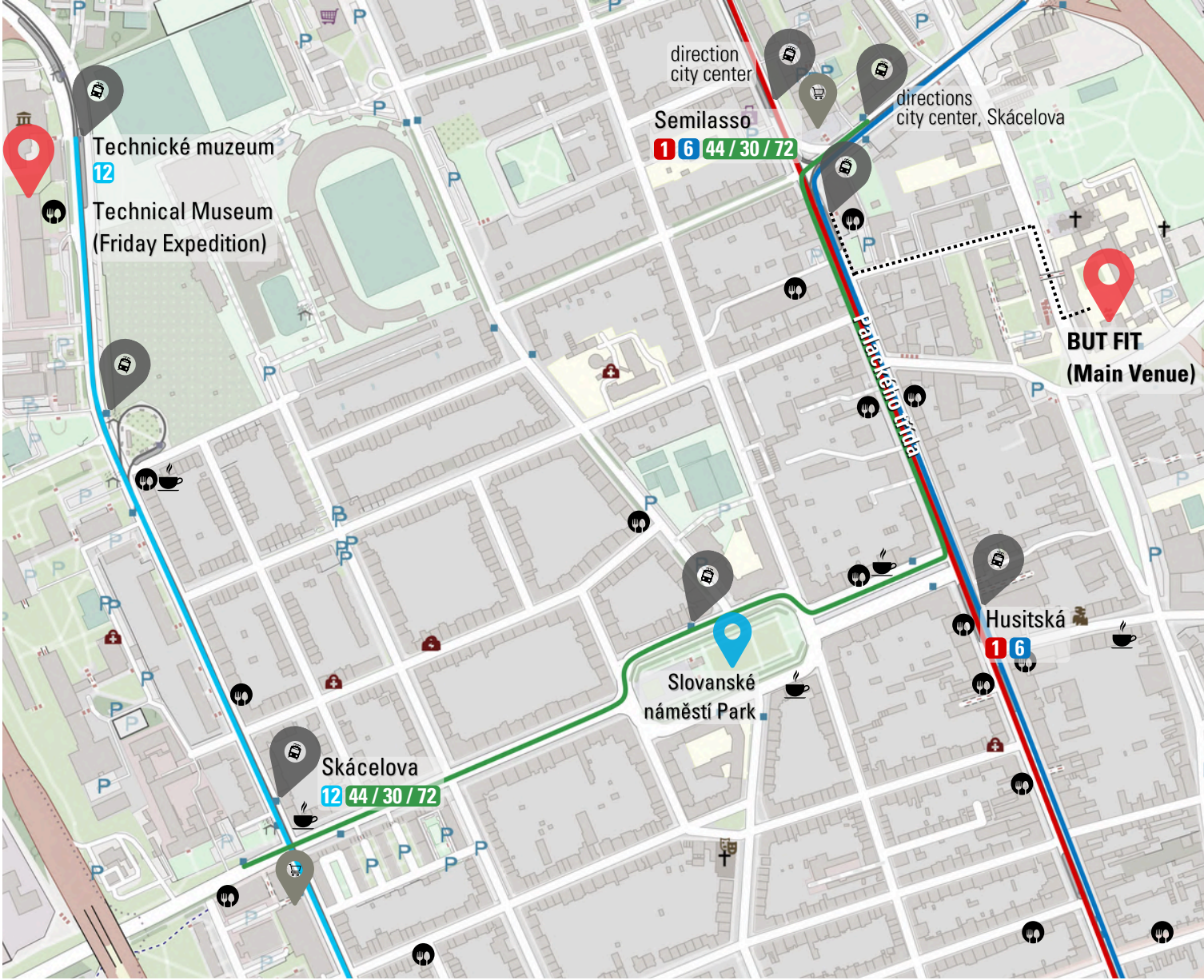
Note that the maps in this guide only show the bare minimum you need to get to the conference venues easily. There are many more options to get everywhere using public transport and don't worry – your ticket is valid for the entire city. Also, it usually doesn't take too long to walk wherever you need. Don't be afraid to get lost in the city for a while, have a snack in one of the many great specialty coffee shops or go for a beer in the evening to one of the breweries or beerhouses!

The Semilasso stop

There are multiple platforms at the *Semilasso* stop. When arriving on a tram **1/6**, you will get off at the one which is nearest to the FIT building. If you want to return to the city center using tram **1**, you'll need to cross the intersection and then cross to the weirdly located platform in the middle of the *Palackého třída* road (N49.22826, E16.59205). It is easier to take tram **6** which has its platform (in the direction of city center) in the middle of the *Kosmova* road (N49.22856, E16.59423) but at least there's a pedestrian crossing in this case. You might also want to take one of the (trolley)buses **44, 30**, or **72** towards the *Skácelova* stop. These depart from the sidewalk of the *Kosmova* road (N49.22826, E16.59344).

Having a lunch near the conference venue

Especially on Friday, you'll need to secure a lunch on your own. There are many options in walking distance from the FIT campus. Our suggestions include: U 3 opic (trad. Czech and international), Charlie's Mill (same), Restaurace Racek (same), Pad Thai, Cha-Cha (Caucasian, 5PM+), Bistro 53 (Vietnamese), Ortica Pizza, Borgeska (Czech), U Mušketýra (Czech), Spirála (vegan), Pho Viet (Vietnamese), Klub cestovatelů (international), Nepal (Indian and Nepalese), Restaurace Na Purkyňce (Czech), The Roses (burgers & hotdogs), or Jean Paul's Bistro Technické muzeum (Italian). There are also many kebab and other take-away places around.



Having a lunch or dinner in the city center

Honestly, it is impossible to fit a list of all the great restaurants you'll find in the city center and it would be unfair to name just a few. You'll find a number of different places all around náměstí Svobody (Freedom Square), Zelný trh (Cabbage Market Square) or the Veverí street. Unlike Prague, the historical center is not filled with tourist traps – so you'll likely be satisfied by any restaurant or bar that looks nice to you.

Spending time in Brno

Restaurants and pubs

Brno offers a rich variety of great restaurants and pubs covering both traditional and international cuisine. See Google reviews to find the best ones or visit the [Taste Brno](#) website that recommends some of the best restaurants, bistros, confectionaries, cafès, beer spots, bars, and wine bars.

Traditional Czech cuisine often surprises foreigners with meals like *vepřo-knedlo-zelo* (roasted pork, bread dumplings and stewed sauerkraut), *svíčková* (marinated beef sirloin cooked with root vegetables, served in a creamy sauce with bread dumplings), *guláš* (a thick, flavorful beef stew similar to the Hungarian goulash) or *bramboráky* (potato pancakes made with grated potatoes, garlic, and marjoram) that can also be served as a side to meat dishes. From the sweet meals, you might want to try one of the many variations to *koláč* (sweet pastries filled with fruit, curd, or poppy seeds). A word of advice: Eating (bread) dumplings with your hands is a big no-no!

In Czechia, going “for one beer” (“na jedno”) is a common way of socializing. Of course, it never ends with just one. While beer is popular in the entire Czech Republic, the Moravian region is also known for its wine and slivovitz (local plum brandy). We highly recommend trying some of the famous Czech beers. While the big brands like Pilsner Urquell, Staropramen, or Budweiser Budvar can also be found abroad, in Brno you can discover a number of lesser-known great beers that are not available elsewhere in the world. And how to say “cheers” in Czech? “Na zdraví!” (Nah-zdra-vee – “To your health!”). From non-alcoholic drinks, you must try Kofola – the famous Czechoslovak alternative to Coca-Cola. It will be available at the conference catering.

One more thing to point out: Czech waiters, especially at places with less tourists, are sometimes a bit gloomy (possibly a relict from the communist era), do not speak perfect English, or may not speak English at all. Please don't take it personally.

Fun fact: Did you know that since 1993, Czechs have held the world's record in beer consumption per capita (188.5 liters)?

Tipping

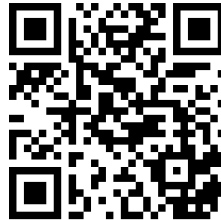
In Czech restaurants and pubs, VAT is always included in the price, while **tips** are not. In general, tipping is not considered mandatory, but is encouraged and makes the staff happy. Once you ask for a bill, the staff informs you about the final price. You then tell them how much you want to actually pay, including the tip. Mostly, tipping around **10%** or even less is fine. Czechs typically just round the price to the next 10, 20, 50 or 100, depending on the price, e.g., when asked to pay 370 CZK, they say "400".

Shopping

For buying food or drinks, you'll find many supermarkets around the city or in large shopping centers. Fair quality for reasonable prices is offered by chains like **Tesco**, **Albert**, **Billa**, or **Lidl**. Large shopping centers are mostly outside of the center. The only big one located in the city center is the [Galerie Vaňkovka](#). If you want to look for souvenirs, we recommend checking one of the [Tourist Information Centres \(TIC\)](#).

Sightseeing

Check out the [Go To Brno](#) website! It offers a great overview of the Brno's top destinations, including holy sites, architecture, museums and galleries, or even the spectacular historical underground tours. All the places are described in English and you'll find a couple of tour guides. Our personal favorite are the breathtaking Žlutý kopec Water Tanks!



gotobrna.cz/en

▽ Žlutý kopec Water Tank #2
(© Vodojemy Žlutý kopec, [source](#))



Conference schedule overview

Tuesday, April 1

Tuesday is the workshop and DFDS (Digital Forensics Doctoral Symposium) day. The workshops are held in three lecture halls D105, D0206, and D0207. Note that the D020X rooms are underground – they are located **below** D105. Refer to the website or the attached “detailed schedule” for more information on where your workshop is.

08:00 – 09:00 Registration

09:00 – 10:45 Workshops

10:45 – 11:15 Coffee break

11:15 – 13:00 Workshops

13:00 – 14:00 Lunch break

14:00 – 16:00 Workshops + DFDS

16:00 – 16:30 Coffee break

16:30 – 18:00 Workshops + DFDS

19:00 – 21:00 **Welcome Reception** **BUT Rectorate** (Antonínská 548/1)

Thursday, April 3

08:30 – 09:00 Registration

09:00 – 10:00 **Keynote** – Col. Jiří Štochl (Police of the Czech Republic)

10:00 – 11:00 Poster session

11:00 – 11:30 Coffee break

11:30 – 13:00 Paper session: Digital Forensic Science

13:00 – 14:00 Lunch break

14:00 – 15:30 Paper session: AI in Digital Forensics

15:30 – 16:00 Break

16:00 – 17:00 Short presentations 2

19:30 – 23:00 Networking **U Královny Elišky** wine cellar
(Mendlovo náměstí 959/1b)

Wednesday, April 2

The conference lectures are all held in D105. Posters are located in the corridors above (follow the signs). Refer to the website or the attached “detailed schedule” for more information on the sessions.

08:30 – 09:00 Registration and networking

09:00 – 09:30 Welcome address

09:30 – 10:30 **Keynote** – Dr. Iwen Coisel (European CyberCrime Centre, Europol)

From Blueprint to Reality: The Journey of Building a Decryption Platform

10:30 – 11:00 Coffee break

11:00 – 13:00 Paper session: Mobile & IoT

13:00 – 14:00 Lunch break

14:00 – 15:00 Short presentations 1

15:00 – 15:30 Coffee break

15:30 – 16:30 Paper session: Memory

16:30 – 17:00 Lightning talks

17:00 – 17:30 Virtual poster

19:30 – 20:30 **Banquet & Awards Ceremony** **Pivovarská Starobrn**
20:30 – 23:00 **Forensics Rodeo** (Mendlovo náměstí 158/20)

Friday, April 4

09:00 – 09:30 Registration

09:30 – 10:30 Paper session

10:30 – 11:00 Coffee break

11:00 – 12:00 Paper session: Cryptocurrency

14:00 – 16:30 **DFRWS Expedition** **Technical Museum in Brno**
(Purkyňova 2950/105)



Find the latest schedule on dfrws.org/eu-2025-program/.